

University of Hawai'i at Mānoa



Developmental and Reproductive Biology Graduate Program

The **Developmental and Reproductive Biology (DRB)** Graduate Program at the University of Hawai'i at Mānoa (<https://grad-drb.jabsom.hawaii.edu/>) is seeking enthusiastic and talented students interested in obtaining MS and/or PhD degrees in developmental and reproductive biology.

The DRB program is affiliated with the **Yanagimachi Institute for Biogenesis Research (IBR)** and is housed in the Department of Anatomy, Biochemistry and Physiology at the John A Burns School of Medicine, University of Hawaii.

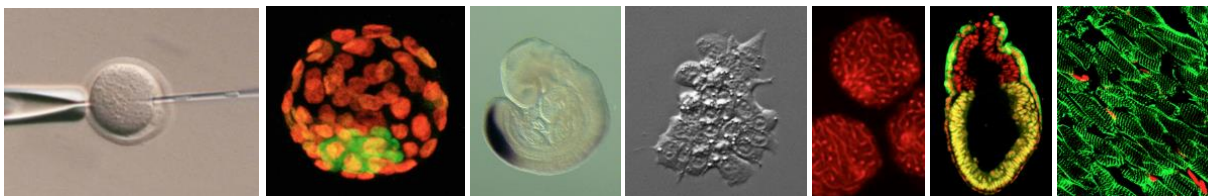
The University of Hawai'i at Mānoa is ranked in the top 250 universities in the world and has a proven track record of providing exceptional training involving elements of didactic learning, research, mentoring, and career development to graduate students. The John A. Burns School of Medicine School is ranked 41 in "Best Medical School: Research".

The YIBR (<https://www.ibr.hawaii.edu/>) was built in honor of one of the university's most distinguished scientists, Dr. Ryuzo Yanagimachi, whose fifty-year career included many significant advances in reproduction. The YIBR is one of the few reproductive and developmental biology centers in the USA. The YIBR and DRB graduate faculty form a vibrant community of investigators spread across many labs. The major focus of YIBR research is reproductive and developmental biology, with emphasis on gametogenesis, assisted reproductive technologies (ART), cloning and nuclear reprogramming, transgenesis, mammalian early development, devo-evo, stem cells, and other.

The DRB program is small, and students are provided with personalized support. A unique aspect of the program is that it serves a diverse community of students from a wide range of nationalities, cultures, and backgrounds. The program offers students various lecture and lab courses and a wide variety of research opportunities. Research is supported by a large range of research platforms, state-of-the-art equipment, and research support. Collectively this creates a highly productive and enjoyable scientific environment in which to undertake a MS and/or PhD.

Applicants interested in the program will have to meet admission requirements for a MS or PhD by the DRB Program and University of Hawai'i at Mānoa Graduate Division as defined at <https://manoa.hawaii.edu/graduate/>. Graduate Assistantships covering tuition fees and a living allowance are available on a competitive basis.

For inquires, please contact Dr. Monika Ward (mward@hawaii.edu).



DRB Website



DRB Video



IBR Website



GD Website

